

Annexure 1: Some fishes of the rivers, haors, baors, beels and floodplains of Bangladesh



Amblypharyngodon mola



Catla catla



Chela cachius



Cirrhinus cirrhosus



Salmostoma bacaila



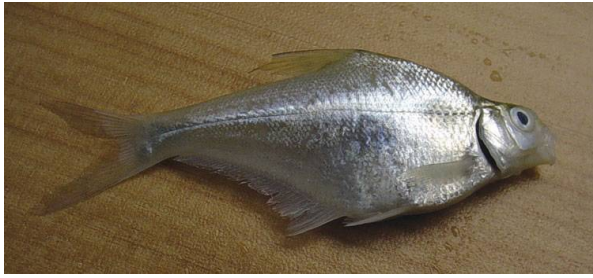
Labeo rohita



Labeo gonius



Labeo calbasu



Osteobrama cotio



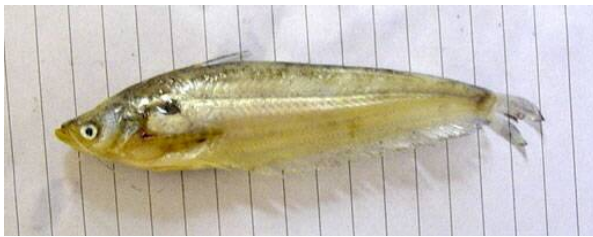
Puntius sophore



Rasbora rasbora



Ompok bimaculatus



Ompok pabda



Wallago attu



Mystus gulio



Mystus cavasius



Mystus tengara



Mystus vittatus



Sperata aor



Sperata seenghala



Silonia silondia



Eutropiichthys vacha



Clupisoma garua



Pangasius pangasius



Notopterus chitala



Notopterus notopterus



Gudusia chapra



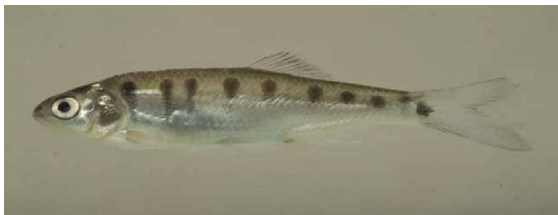
Glossogobius giuris



Odontamblyopus rubicundus



Cynoglossus lingua



Barilius barila



Danio dangila



Esomus danricus



Labeo bata



Puntius ticto



Puntius terio



Psilorhynchus balitora



Ompok pabo



Pseudeutropius atherinoides



Arius maculatus



Batrachocephalus mino



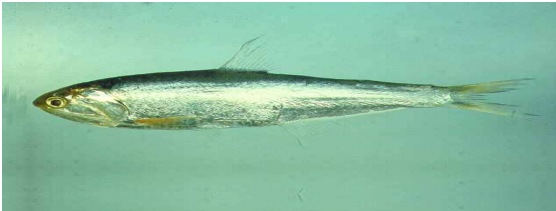
Apocryptes bato



Brachygobius nusus



Thryssa mystax



Thryssa dussumieri



Setipinna taty



Setipinna phasa



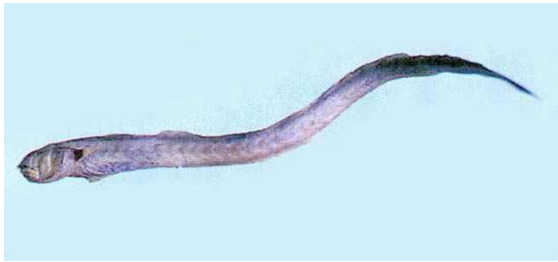
Nandus nandus



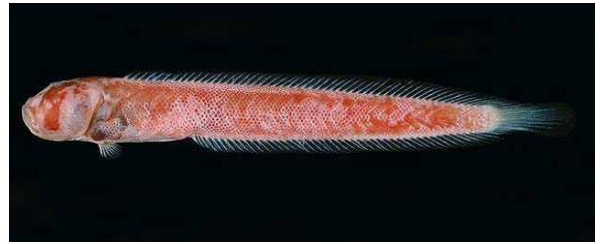
Liza parsia



Botia dario



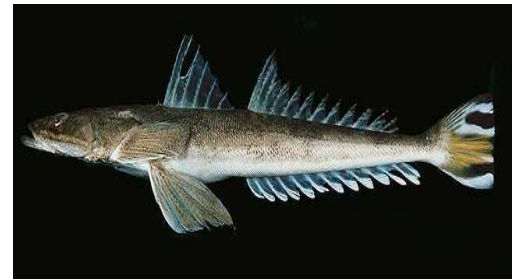
Odontamblyopus rubicundus



Trypauchen vagina



Anodontostoma chacunda



Platycephalus indicus



Cynoglossus bilineatus

Annexure-2: grm Lvgi i nfbai mqbK `e`i e`envi I Drm Ric

Lvgi i bvg I W/Kiv t

2. AvqZb t----- (kZisk/GKi/ieNv)

3. cKzi i msL`it bvmfx gRy nvcimn cKz

4. Pvl vaxb gvQt cvsMvm tZj mcqv %K mks/gv, i i " B-KvZj

Ab`vb` gvQ (W K)

cKz c`iZ

5. cKz i Kvibv nqtQ W Kbv nv bv

6. cKz i KvibvKvj W K i mqbK `e`i e`envi Kiv nqtQ

e`enZ `te`i bvg	cvi gvb/tWvR ev giv	KZevi c`qM Kiv nqtQ

7. Pvl Kvj e`enZ mvi/RxevbvkK/Ab`vb` i mqbK `te`i bvg

e`enZ `te`i bvg	cvi gvb/tWvR ev giv	KZevi c`qM Kiv nqtQ

8. gvtQi Lv` c`qMt Lvgi `Zvi Llevi evWvR`K Llevi

Lvgi e`enZ wUvgb ev Ab`vb` i mqbK `te`i bvg	cvi gvb/tWvR ev giv	KZevi e`nvi Kiv nqtQ

9. *gvṭQi tivM cōZṭivṭa e'enZ eivivqubK `ḥe'i bvg*

<i>ṭivM cōZṭivṭa e'enZ eivivqubK `ḥe'i bvg</i>	<i>civigvb/ṭWvR ev gvṭv</i>	<i>KZevi cōqivM Kiv nṭqṭQ</i>

10. *gvQ Pvl ev Lvgvṭi evenZ Ab'vb' iivivqubK `ḥe'w i weeiY*

<i>e'enZ iivivqubK `ḥe'i bvg</i>	<i>ṭK KviṭY e'envi Kiv nṭqṭQ</i>	<i>civigvb/ṭWvR ev gvṭv</i>	<i>KZevi cōqivM Kiv nṭqṭQ</i>

11. *gvQ Pvl ev Lvgvṭi evenZ iivivqubK `ḥe'w i mslMh/μṭqi Drm*

<i>iivivqubK `ḥe'i bvg</i>	<i>ṭK KviṭY μq Kiv nṭqṭQ</i>	<i>civigvb</i>	<i>mieivnKivx/ṭKv^αcivb</i>

12. *gvQ Pvl ev Lvgvṭi evenZ iivivqubK `ḥe'w i DcKvi I AcKvi*

<i>DcKvi mgn</i>	<i>AcKvi mgn</i>

Annexure 3: Questionnaire used during data collection

Questionnaire for Fish/Shrimp farmers

Farmers name and address:

Farm location:

1. Name :

2. Address : Village:

Union:

Upazila:

District:

3. Farm size (Decimal) :

4. Culture system:

Poly- culture:

Mono-culture

Species: a)

Species:

b)

c)

d)

e)

5. Do you use drugs and chemicals at your nursery or farm?

Yes

No

If yes please mention the name of drugs and chemicals

a)

b)

c)

d)

e)

6) Where do you get advice or instruction to use medicine/ chemicals?

a) Neighbouring farmers:

b. NGOs training:

c) Medicine traders:

d) Medicine company representative:

e) Feed miler / company:

f) DoF officials:

g) Others (Specify):

7. Why do you use them?

- a)
- b)
- c)
- d)

8. Do you get desired benefit by using medicines?

Yes

No

9. Do you know about the bad effect of the chemicals you used?

Yes

No

If yes, what are those?

10. What do you know about banned chemicals or medicine?

If yes, please mention names:

- a)
- b)

11. What are the sources of obtaining or purchasing drugs/ chemicals?

- a)
- b)

12. Do you purchase in loose or in packaged form?

If purchased in packaged form, does it contain the following information?

- a) Product name
- b) Manufacturers name
- c) Production date
- d) Expire date
- e) Composition
- f) Instruction for use
- g) Precaution

13. Do you use any drugs/ chemicals to protect shrimps/ prawn or any other diseases?

Yes

No

If yes, what are those?

- a)
- b)

14. Do you use any of the following products to grow your shrimp/ prawns faster?

Yes ☐

No ☐

- a) Probiotics
- b) Vitamins
- c) Minerals
- d) Herbal products
- e) Additives
- f) Others

15. What are the sources of information about the above products?

- a)
- b)

18. What type of medicine do you use to manage water quality of your pond/ Gher?

- a)
- b)

20. Did you receive any training on fish/ shrimp farming/use of chemicals?

Yes ☐

No ☐

If yes, from which organization?

- a)
- b)

22. How do you collect drugs for treatment of shrimp and use in feed?

- a) Local aqua drug store
- b) Company representative
- c) Imported
- d) Don't know
- e) Others (specify)

23. What are the diseases occurs?

- a)
- b)

24. Seasons of diseases occurred:

a)

b)

25. Drugs/ chemicals used in diseases prevention/ treatment

Please mention the dose

Name of Respondent:

Signature

Name of Interviewer:

Signature

Date:

Annexure-4 :Questionnaire for Traders/Suppliers

1. What types of medicine you are supplying for shrimp / prawn farming?

- a)
- b)
- c)

2. Sources of medicine collection

- a)
- b)
- c)
- e) Imported (Name and country of origin)

3. Do you know about the function of the supplied drugs/chemicals?

Yes

No

If yes, explain-----

4. Do you manufacture any medicine?

Yes

No

If yes, what is that?

- a)
- b)

5. Do you have Drug licence?

Yes

No

6. What are the sources of information of your supplied drug/chemicals?

- a) Company representatives
- b) DoF officials
- c) Others (Specify)

7. What type of chemicals you suggest for controlling algae or aquatic vegetation?

- a)
- b)

8. What type of chemicals you are suggestion farmers for control water quality?

- a)
- b)

9. What types of medicine /drugs you are suggesting or selling farmers demand for disease Prevention or treatment?

- a) Antibiotic
- b) Probiotics
- c) Others (Specify)

10. How you are keeping your drugs and chemicals in your shop?

- a) Maintain temperature
- b) Room temperature
- c) Cold chain management
- d) Others (specify)

11. Do you have any idea about banned drugs/ chemicals?

Yes

No

If yes, what they are?

12. What are the effects of drugs and chemicals used in shrimp/ prawn on consumers?

- Adverse effects:
 - a)
 - b)
- Beneficial effects:
 - a)
 - b)

13. Do you supply any drugs/ chemicals to feed manufacturers/Producers?

Yes

No

If yes, Names:

- a)
- b)

14. Do you sell any loose drugs/ chemicals?

Yes

No

15. What do you do with Exp. Dated chemicals/ drugs?

- ☐ Withdrawal by the company
- ☐ Destroy by yourself
- ☐ Sell without label
- ☐ Others (specify)

16. Do you have any training on drugs?

Yes

No

17. Do you sale different drugs and chemicals from the same shop?

Yes

No

If yes,

- ☐ Aqua drugs
- ☐ Aqua feeds
- ☐ Human drugs
- ☐ Others (specify)

18. What are the problems you are facing to perform your business?

a)

b)

19. Is there any authority for inspection your pharmacy/ shop?

Yes

No

If yes, which organization?

- ☐ DoF (Department of Fisheries)
- ☐ Drug administration.
- ☐ Others (Specify).

20. What types of support you are getting from different organization/
manufacturing company?

a)

b)

c)

d)

Name of respondent:

Signature:

Name of interviewer:

Signature:

Date: